

VEGA

INTERNATIONAL TRAVEL SERVICES
75 YEARS OF EXCELLENCE IN TRAVEL

Amazing Japan

Travel Itinerary

2021-2022





DAY 1

Konichiwa! Welcome to **Japan!**

- Arrival to **Tokyo**
- After entry procedures, English-speaking assistant meets you at the exit from the custom.
- Transfer by private minivan from Narita Airport to your hotel with assistant
- *Baggage will be put in the baggage storage of the car





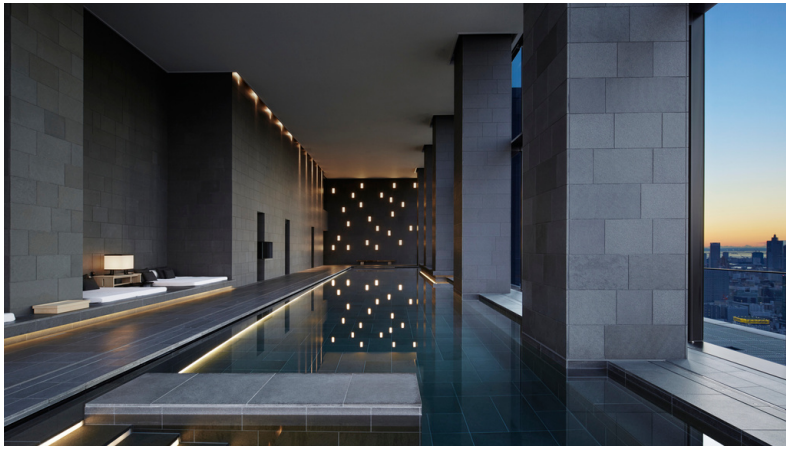
FOR YOUR ACCOMMODATION IN
TOKYO WE WOULD SUGGEST SEVERAL
PROPERTIES



Peninsula Tokyo

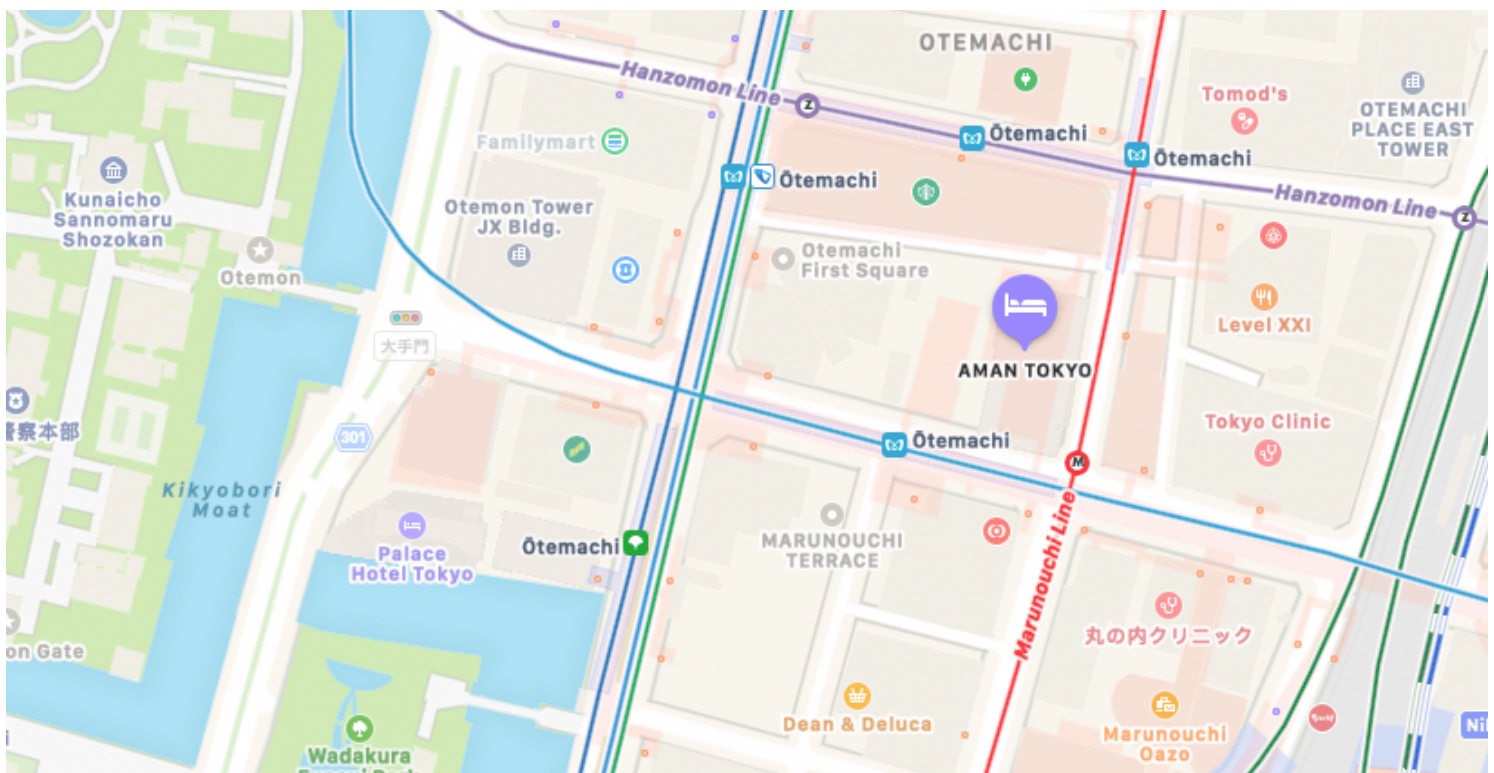
Peninsula Tokyo is located in Marounouchi district, just few steps away from Imperial Palace Hotel is chic and mordern.





Aman Tokyo

Aman Tokyo – sophisticated, Japanese style property in Otemachi district, close to Imperial Palace.





Park Hyatt Tokyo

Park Hyatt Tokyo – is a beautiful hotel in vibrant Shinjuku district. You will find here well-known bar and restaurant in the city!





ブルマン
正実ビル

かつや

カツ丼・とんかつ

焼肉
寿亭
JUTEI
50席完備 B1

イロキ
メカ本

日専連
渋谷会

和民

金の目

2F

おひい
サバー

AVIA

カミ

2F

おひい
サバー

AVIA

鳥井ビル

あ
鬼が島

Bar
Geranium

バラの木

スチ
ポワ

楽園

手前角
右折

日立
専断工具

吉沢利工

ス
ヘアキー

UC SHOP

UC SHOP

UC SHOP

UC SHOP



DAY 2

11:00 Full-day city sightseeing of **Tokyo** by private minivan

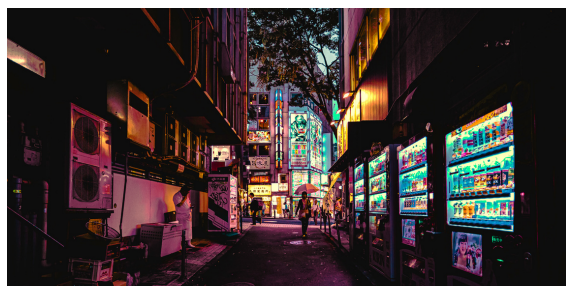
With English-speaking guide, visiting:

- Imperial Palace Plaza
- Tokyo Tower
- Meiji Jingu Shrine
- Shibuya Crossing
- Harajuku and Omotesando Street

Return to the hotel(17:00)

18:45 Private transfer (round trip) from the hotel to the restaurant with English-speaking guide

19:00 our suggestion for the dinner - Sukiyabashi Jiro Honten



DAY 3

11:00 Full-day city sightseeing of **Tokyo** by private minivan with English-speaking guide, visiting:

- Tsukiji Outer Market
- Edo Tokyo Museum
- Asakusa Kannon Temple & Nakamise Shopping Arcade
- Ginza

Return to the hotel(18:00)

19:00 Private transfer (round trip) from the hotel to the restaurant with English-speaking guide

19:30 ou suggestion for the dinner - Restaurant Ginza Ukaitei(Teppanyaki)





DAY 4

10:00 Full-day excursion to **Nikko** by private minivan with English-speaking guide, visiting:

- Toshogu Shrine
- Lake Chuzenji
- Kegon Waterfall

Transfer back to the hotel in Tokyo(18:00)

19:00 Private transfer (round trip) from the hotel to the restaurant with English-speaking guide

19:30 our suggestion for the dinner - Restaurant Higashi Branch(Robatayaki)



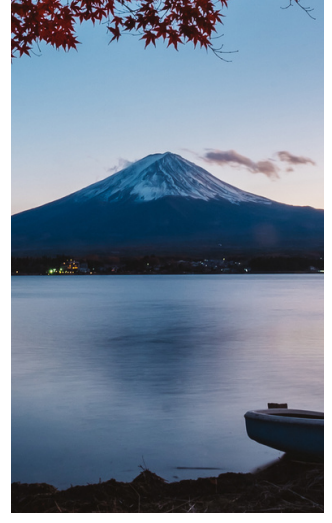
DAY 5

11:00 Kabuki Performance tickets arrangement in Tokyo

18:45 Private transfer (round trip) from the hotel to the restaurant with English-speaking guide

19:00 suggestion for the dinner - Restaurant Ginza Kyubei (sushi)





DAY 6

09:00 Transfer to **Mt. Fuji & Hakone** by private minivan with English-speaking guide, visiting:

- Fifth Station of Mt. Fuji
- Lake Ashi Excursion Boat
- Komagatake Ropeway

Transfer to the hotel in Hakone(16:30)

*Baggage will be put in the baggage storage of the car



Ryokan Gora Kadan

In Hakone we would recommend you to stay at ryokan – Japanese style hotel. Gora Kadan – is one of the best ryokans in Japan.







DAY 8

11:00 am – private transfer to Odawara. From Odawara you will take a bullet train to Kyoto.

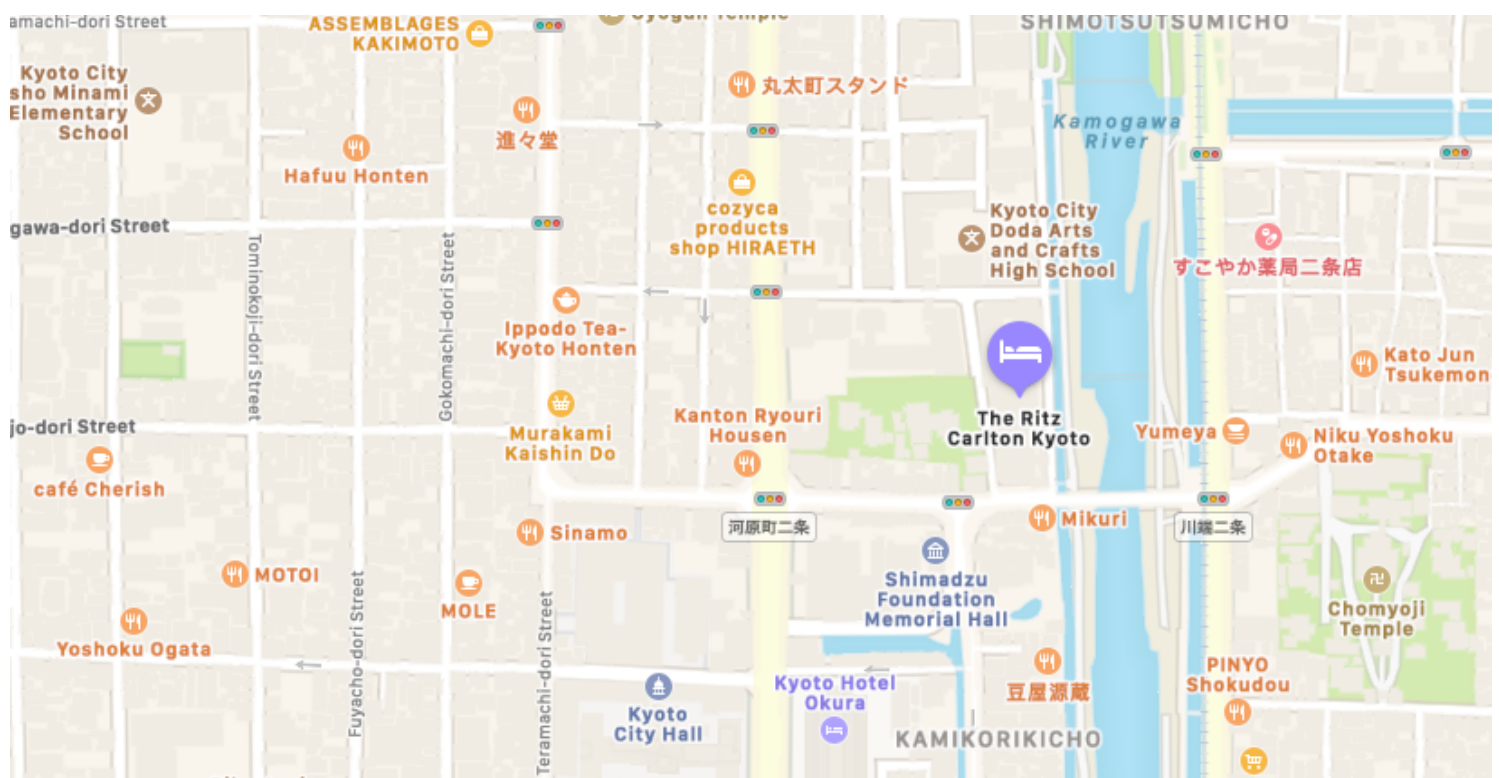


FOR YOUR ACCOMMODATION IN
KYOTO WE WOULD SUGGEST COUPLE
PROPERTIES



Ritz Carlton

Location of Ritz Carlton in Kyoto is a stylish hotel perfectly located in the city center.





Four Seasons Hotel

Intimate and contemporary, Four Seasons Hotel Kyoto is set in the scenic district of temples.





DAY 9

11:00 Full-day sightseeing of **Kyoto** by private minivan with English-speaking guide, visiting:

- Kiyomizu Temple
- Nijo Castle
- Heian Jingu Shrine
- Ryoanji Temple
- Kinkakuji Temple

18:00 Return to the hotel

19:00 Private transfer (round trip) from the hotel to the restaurant with English-speaking guide

19:30 dinner in the Restaurant Sushi Matsumoto



DAY 10

11:00 Full-day sightseeing in **Kyoto** by private minivan with English-speaking guide, visiting:

-
- Gion Festival (Observation Seats)
- Culinary Tour at Nishiki Market, Afternoon

Return to the hotel (18:00)

19:00 Evening, dinner at local restaurant with round trip transfers by private minivan with English-speaking guide

19:30 Restaurant - Tempura Yoshikawa





DAY 11

10:00 Full-day excursion to **Nara** by private minivan with English-speaking guide, visiting

- Todaiji Temple
- Nara Park
- Kasuga Taisha Shrine
- Kofukuji Temple

Transfer back to the hotel in Kyoto (18:00)

19:30 round trip transfers by private minivan with English-speaking guide

19:50 Restaurant Kichisen (kaiseki)



DAY 12

11:00 Half-day sightseeing of **Kyoto** by private minivan with English-speaking guide, visiting

- Private Tea Ceremony and Zen Meditation at the temple not open to the public.
- Fushimi Inari Shrine
- Sake Tasting at Gekkeikan Museum

Then, transfer to Kyoto Station.(17:00)

17:45 Leave Kyoto for Osaka.

エビス
年中無休

半田
酒店

★
喫茶

新世界
おみやげSPOT
大阪名物
ビリーズ
shop
大坂みやげ
毎度お

軽食
コーヒー

喫茶
★
スター

名物 かつおの
鶴亀家
24時間営業中

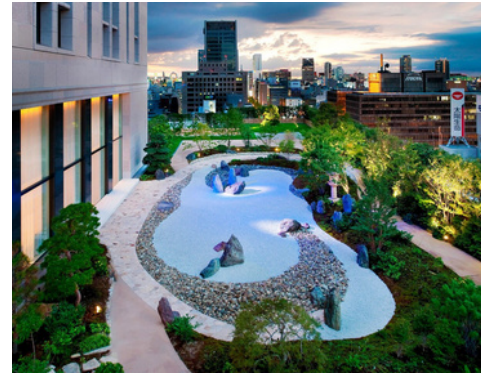
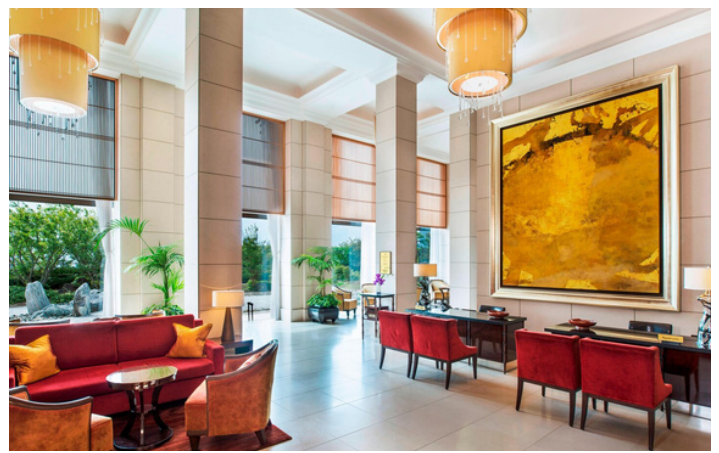
麻雀
NEW

24時間
名物 かつおの
鶴亀家

エビス

社会インベ
シヨンの日

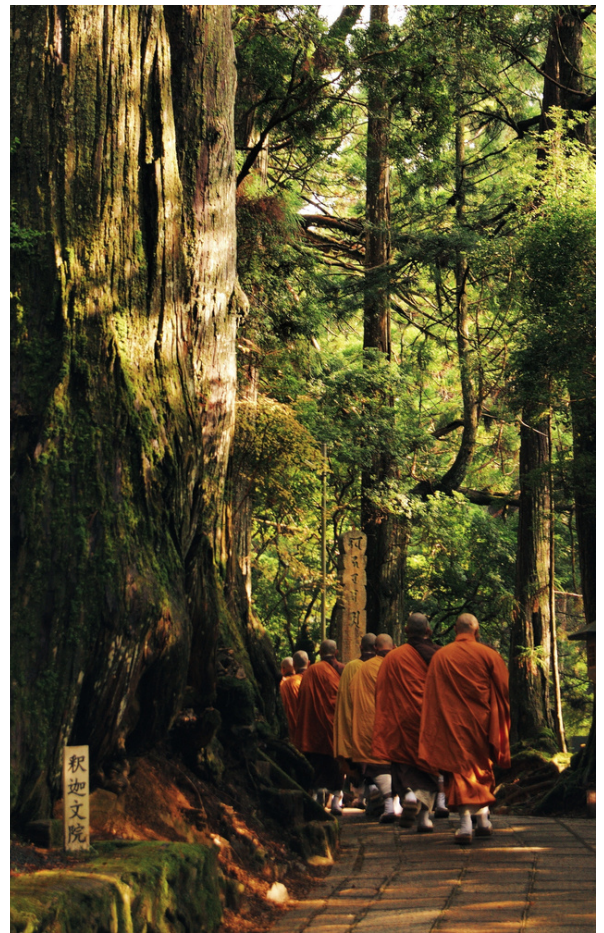




St. Regis

In Osaka, for 1 night stay we would recommend St. Regis





DAY 13

11:00 private transfer (1h30min) will take you to mysterious **Koyasan** - an amazing monastic site. Just imagine small town that consists of several dozens of Buddhist Monasteries, located far in the mountains, hidden from outer world. Many of them are UNESCO sites.

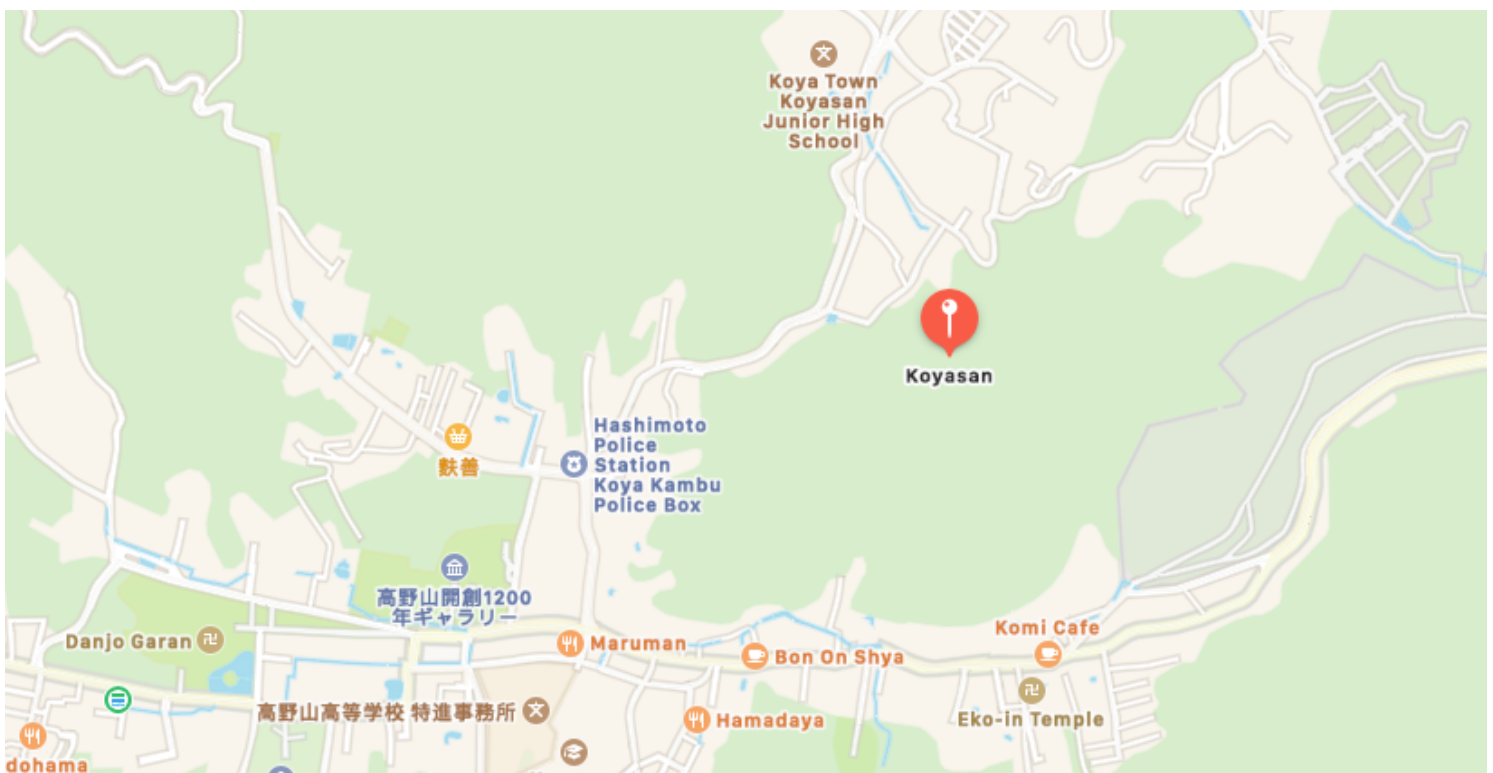
In the evening wander at least 2 - 3 hours at Okunoin cemetery (UNESCO site located in a beautiful forest)

There are also night tours organized by monks if weather permits



Shukubo monastery

To spend the night in one of this monasteries (called shukubo) and enjoy vegetarian food cooked by monks is absolutely fascinating experience!





DAY 14

06:00 am – join buddhist morning prayer service

07:00 - breakfast prepared by monks

08:00 - Spend 4 hours exploring Danjo Garan and Kongobuji UNESCO sites and area with English speaking guide (combination of walking and car)

13:00 - after lunch private transfer will take you back to Osaka Kansai Airport.

A person is seen from behind, sitting on a tatami mat in a traditional Japanese room, looking out at a beautiful garden. The garden features a pond, large rocks, and trees with vibrant autumn foliage in shades of red, orange, and yellow. The scene is framed by a dark wooden lattice window. The text "JAPAN TRAVEL TIPS" is overlaid in the center of the image.

JAPAN TRAVEL TIPS

The climate of Japan

- Japan lies in the northern hemisphere, with the majority of the island chain belonging to the temperate zones. However, because of the complex geography and long north-south range, the climate differs broadly by region, even during the same season. Clear-cut four seasons allows you to enjoy a scroll of landscapes.

Time difference

- Japanese standard time is GMT+9.

Telephone

- Most of public telephones will accept ¥10, ¥100 coins or magnetic prepaid card. Emergency phone numbers are: Police: 110, Ambulance / Fire: 119

Electricity

- Power voltage is 100 Volt throughout Japan with two different frequency: 50HZ in the Eastern part of Japan, and 60 HZ in the western part of Japan. They are divided by River Fuji running cross the central part of Honshu Island

Language

- In writing, the Japanese use two different syllabaries, Kata-kana and Hira-gana in addition to Kanji (Chinese characters). Kata-kana is formed from either the radical or the component of a Kanji, while Hira-gana is taken from Kanji and written in a cursive style. In western-style hotels, they speak some English, but in Japanese style hotels few of them speak English. Names of stations of Japan Railway Line (JR), private lines and major trunk roads are specified in English.

Transportation

- In Japan, railroad, bus, and other transportation means cover the whole country to serve the daily needs of the people and also has developed elaborate transportation system. In addition to long distance and commuter trains of Japan Railway Line (JR), subways in major cities, and many private lines make your travel in Japan very simple, and convenient.

Water

- Tapping water supplied by drinking water treatment plants in hotels, is safe water regulated under the law of water service. However, we recommend you to consume bottled mineral waters if you are sensitive to water.

Currency and Exchange

- The Japanese unit of currency is the yen, indicated by the symbol ¥. There are ¥1,5,10,50,100 and 500 coins. Bank notes are available in domination of ¥1,000, ¥2,000, 5,000, and ¥10,000. There are many coin-operated vending machines, used to purchase short-distance rail tickets and subway tickets as well as a variety of products used in daily life, including cigarettes, soft drinks, and even beers and other alcoholic beverages. It costs ¥10 to make a local call on public telephones. Credit cards can be used at most hotels, department stores, duty free shops, restaurants, as well as at most stores. Credit

Cards Credit

- Cards can be accepted at most hotels, department stores, duty free shops, restaurants as well as at most stores. However, if you drop in small shops in local areas, you cannot use credit cards. We recommend you to be ready with cash before going to such areas.

Tipping

- Tipping is not necessary in Japan.

Bargaining

- There is no bargaining in Japan, except at special places like Akihabara. Prices are almost always fixed.

Public Restrooms

- There are two types of chamber pots, a traditional style one is squat affair inside a cubic shaped stall that measures only about 3 feet each way. This comes from Japanese aversion to sitting on public toilet seats. Another one is western-style one. If you go to the local area, it may be difficult to find western-style ones.

Accommodations

- Ryokan In Japan, there are have various types of accommodations. One of them is Ryokan, Japanese style inn, complete with a wide variety of traditional facilities. You are served dinner and also breakfast. Rooms are usually Japanese style, spread with tatami, straw mat used for flooring. You sleep on futon (thin mattresses spread on tatami mats). They provide meticulous service, maintaining purely Japanese atmosphere. Hot Spring Bath There are more than 2,000 hot spring spas throughout Japan, most of which are concentrated in the volcanic regions. Its temperature is naturally more than 25 degrees centigrade, contains some mineral water over 1g dissolved matter per 1Kg water and has medical effect for bathing or drinking.

Postal Services

- Postal cards and stamps sold at all postal offices. They are open from 9:00 am to 5:00 pm., Mondays through Fridays. You can also buy stamps and get information on rates in hotels. Stamps have a wide variety of designs for even same rates, commemorating events or featuring landscapes of local districts.